

Procedures for Creating and Storing Maps through AgroDoc.NET

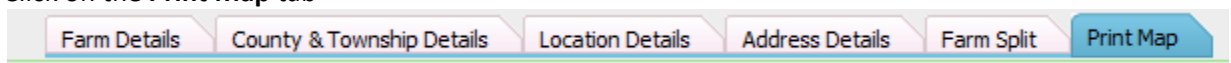
Maps are pictures that are tied to the Farm record in the AgWorks database. Maps can be created in a variety of ways:

- By using AgWorks' AgroMap module
- From a scanned image
- From another mapping software there the file is saved as a *.jpg (jpeg) file type

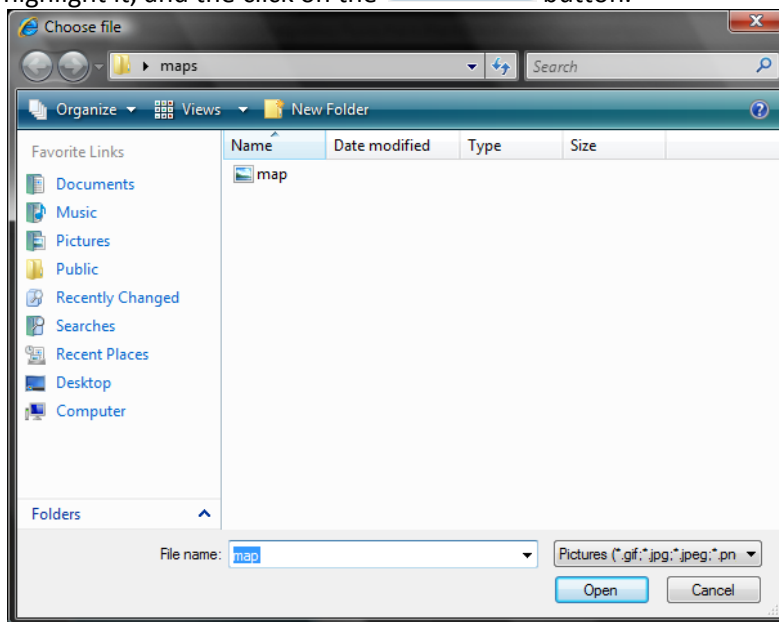
1. To add your previously created and saved image, open AgroDoc.NET and navigate to the following: Tools > Farm



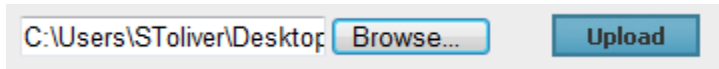
2. Select a Customer by clicking on the → button
3. Select a Farm by clicking on the → button
4. Click on the **Print Map** tab



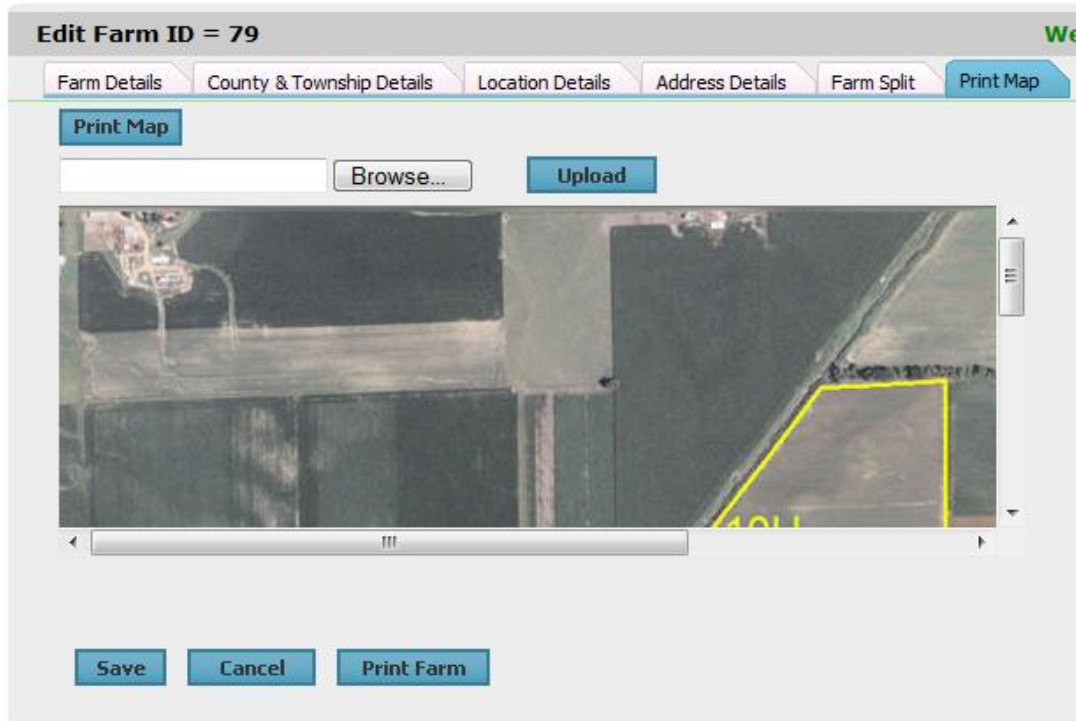
5. Click on the **Browse...** button to navigate to your saved image
6. Navigate to the location your image/map is saved on your computer. Click on it once to highlight it, and then click on the **Open** button.



7. Click on the **Upload** button



8. A preview of your map should display on the screen



- a. If you would like to print a copy of the map you can click on the **Print Map** button, or if you would like to print a report of the Farm data, you can click on the **Print Farm** button.
9. Click on the **Save** button to save this image as your Farm Map and complete this task.