

AgWorks, Inc.

111 West 76th Street – Davenport, IA 52806

Procedures for:

Setting up Applicator Machines

Revisions:

Version	Date	Author	Description
-----	05/26/2010	Sara Toliver	Creation of document.

Warning/Notice:

- The following assumes you have already setup Operation Regions within AgWorks Manager > Company > Regions
- The following assumes you have already setup Service Charges within AgWorks Manager > Product/Services > Add New

Procedures:

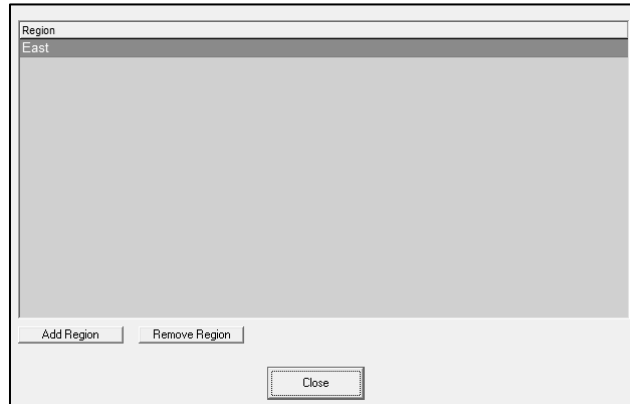
1. Open AgWorks Manager
2. Navigate to: Equipment > Applicator Machine > Add New
3. Enter the appropriate information into the form

ApplicatorID: 10089
Name: TERRAGATOR #2
Accounting interface ID: 10089 Visible
Location Code: GRNISLND

Information:
 Liquid Tank capacity (lb or ga): 0
 Dry Year of manufacture: 2006
 In-Line Injection
 Postemergence
 GPS equipment
 Adjustable to 30" row
 Adjustable to 38" row
 Enable Scheduling
Service charge: DRY_CUSTOM APPL

- A. Enter the Applicator Machine Name
- B. Enter the Accounting Interface ID

C. Select the Operation Region



- i. Select *Add Region*
 - ii. Highlight Region and then Select *OK*
 - iii. Applicator Machines can belong to more than one region, repeat the above steps until you have added the applicator machine to all applicable regions.
- D. Enter/enable specific applicator machine attributes within the *Information* section
- E. Enter a default service charge
- i. This service charge will be applied on the Field Application when the Order is marked "done".
- F. Select *OK* to complete this task