

Procedures for:

Add New Seed Product Based On Existing Seed

AgWorks pursues a policy of continuous, ongoing development that ensures the highest quality standards combined with advanced, state-of-the-art technology for AgWorks products. For this reason, the features described in this Manual could differ from those in your current work environment.

Please contact AgWorks Support for any clarification needed
at (309) 623-4604, opt. 2 or support@agworks.net.

Revisions:

Version	Date	Author	Description
11.1.76(126)	7/20/2012	Katie Bergthold	Creation of document.

Overview:

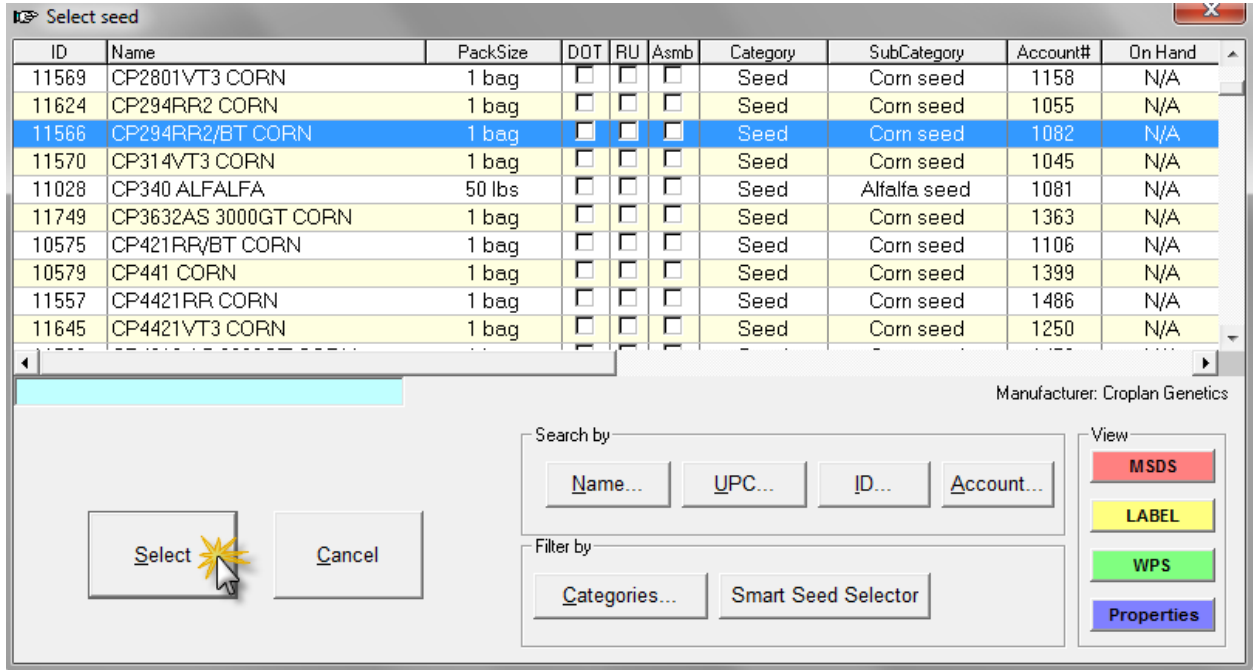
The following guide is to assist the user in the task of creating a new seed product based on one in the system.

AgWorks, Inc.

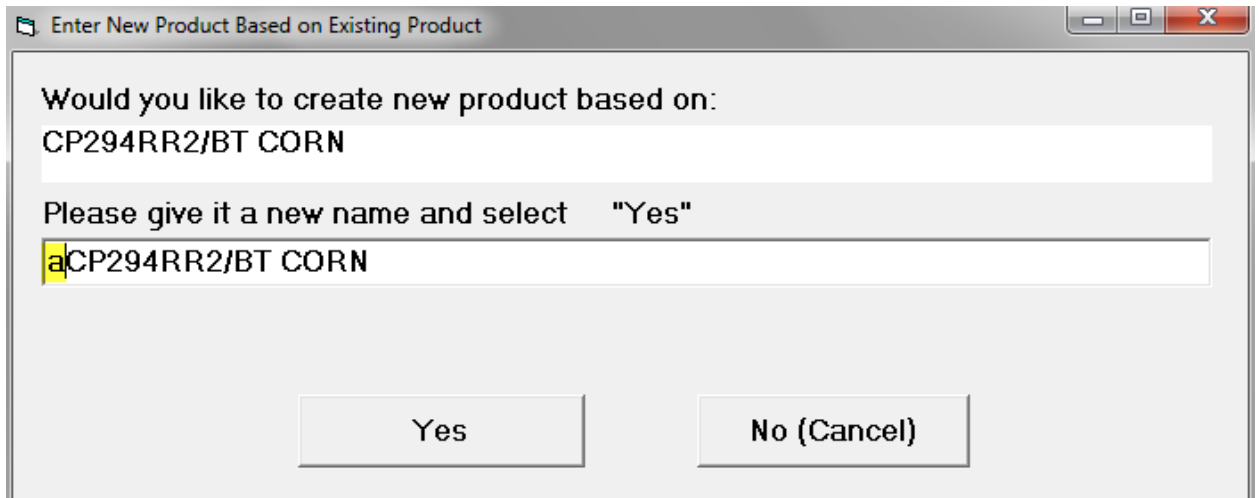
111 West 76th Street – Davenport, IA 52806

Procedures:

1. Within AgWorks Manager, navigate to Products/Services> Seed Products> Add New Seed Product Based On Existing Seed
2. Select desired seed to “copy”



3. In following window user will need to change the name in some way.
 - A. Input in any type of number or alpha character. It can be removed later.



4. If desired remove the character added in previous step.

Product information

ProductID: 11786
Name: CP294RR2/BT CORN

Control by: Level 2 Level 1
PackSize: 1 each X 1 bag DOT HazMat

Description:

Group: Basic

Category: Seed | Corn seed ...

Manuf.: Croplan Genetics

Options:
 Bulk In-Field Usage Assembly
 Discontinued Taxable Do Not Inventory
 In Use

UPC:

EDI code:

Accounting code:

Manufacturer #:

Export Unit: bag

Prices, \$

Cost	0
Wholesale	0
Retail	1

Per: 1 bag

Current Cash	0
Dec Cash	0
Dec Chg	0
Mar Cash	0
Mar Chg	0
Cash/Carry	0
Ins Cash	0
Ins Chg	0
Copy Dec C/C	0
Copy Mar C/C	0

* to edit all 40 price levels use price editor

OK Properties... Cancel Edit Modifiers

5. Make the needed adjustments to seed

Product information

ProductID: 11786
Name: CP294RR2/BT CORN

Control by: Level 2 Level 1
PackSize: 1 each X 50 bag DOT HazMat

Description:

Group: Basic

Category: Seed | Corn seed ...

Manuf.: Croplan Genetics ...

Options:
 Bulk In-Field Usage Assembly
 Discontinued Taxable Do Not Inventory
 In Use

UPC:

EDI code:

Accounting code: 1082

Manufacturer #:

Export Unit: bag

Prices, \$
Cost: 0
Wholesale: 0
Retail: 1
Per: 1 bag

Current Cash: 0
Dec Cash: 0
Dec Chg: 0
Mar Cash: 0
Mar Chg: 0
Cash/Carry: 0
Insn Cash: 0
Insn Chg: 0
Copy Dec C/C: 0
Copy Mar C/C: 0

* to edit all 40 price levels use price editor

OK Properties... Cancel Edit Modifiers

6. Once adjustments completed select OK