

**Procedures for:**

Understanding shipping quantity different then pack size.

AgWorks pursues a policy of continuous, ongoing development that ensures the highest quality standards combined with advanced, state-of-the-art technology for AgWorks products. For this reason, the features described in this Manual could differ from those in your current work environment.

Please contact AgWorks Support for any clarification needed  
at (309) 623-4604, opt. 2 or [support@agworks.net](mailto:support@agworks.net).

**Revisions:**

Version	Date	Author	Description
12.1.4(127)	7/20/2012	Katie Bergthold	Creation of document.

**Overview:**

The following guide is to assist the user in understanding warning received when shipping quantity different from pack size. In example, using Apron Maxx, where product is in 15 gallon containers and user wants to ship 8 gallons.

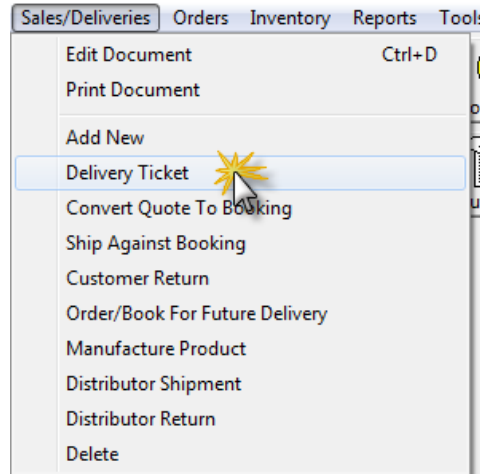
**Procedures:**

1. Create Delivery Ticket

- Select quick button *Delivery Ticket*, or



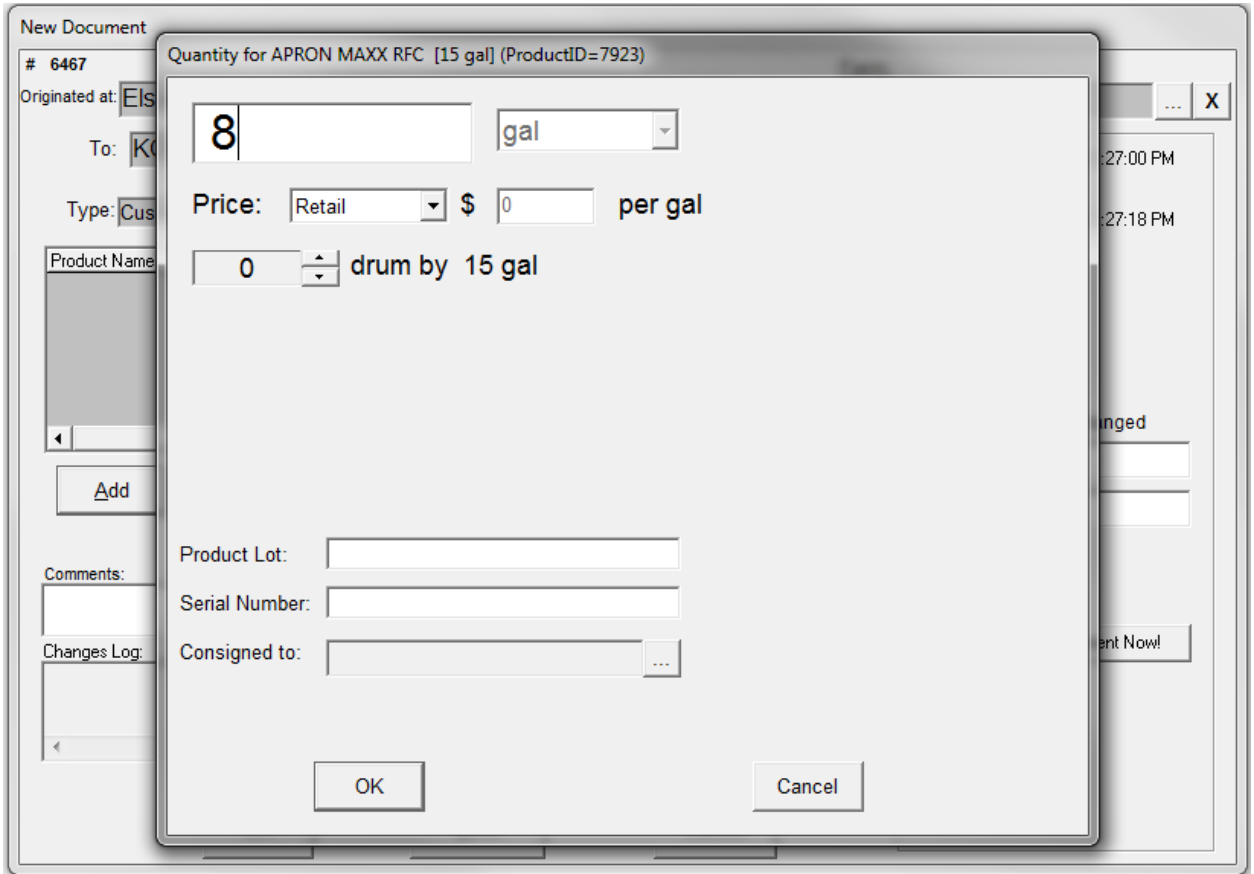
- Navigate to Sales/Deliveries> Delivery Ticket



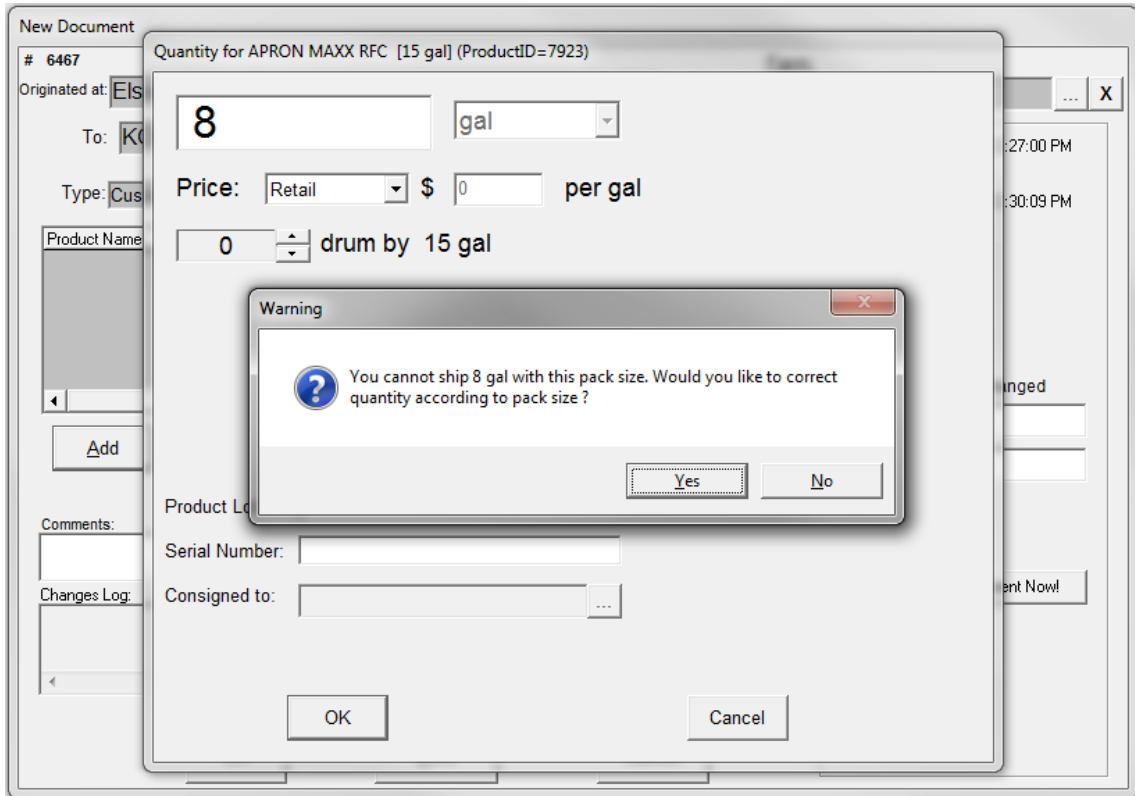
2. Select Add to add product to Delivery Ticket

A screenshot of a "New Document" form. At the top, it shows "# 6467" and "Farm:". Below are fields for "Originated at: Elsie (Location: HOME)", "To: KOOP JIM", and "Type: Customer operation Delivery Ticket". A table with columns "Product Name", "Quantity", "Lot", and "SN" is present. Below the table are buttons for "Add", "Scan", "Edit", and "Delete". A "Comments:" text area and a "Changes Log:" list are also visible. On the right, there are checkboxes for "Invoiced", "Delay Invoicing", "Direct Shipment", and "Quantities were changed", along with "PO:" and "BOL:" fields. At the bottom right, there are "View" buttons for "MSDS", "LABEL", and "WPS", and checkboxes for "Print Prices" and "Print Changes Log". A "Bill & Receive Payment Now!" button is at the bottom right. At the bottom of the form are "OK", "Print", and "Cancel" buttons. The total amount is shown as "Total: \$0.00".

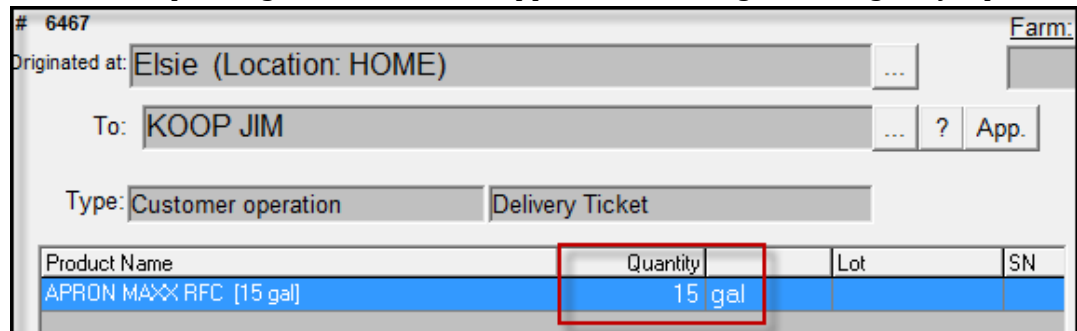
3. Input in number that does match pack size.



4. User will receive warning message:



- If user selects *Yes* then the quantity shipped will be adjusted according to the pack size. In example, 15 gallons would be shipped instead of 8 gallons originally input.



- If user selects *No* then the quantity shipped will *not* be adjusted. The input quantity of 8, will be the quantity shipped.

