

Procedures for:

Understanding *In-Field Usage* check box on Product

Revisions:

Version	Date	Author	Description
11.1.77 (126)	05/02/2012	Katie Bergthold	Creation of document.

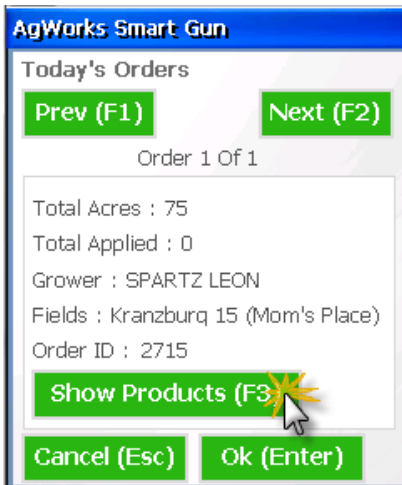
Procedures:

1. Open AgWorks Manager
2. Navigate to Products/Services > Edit
3. Select desired product
4. Enable by checking box on *In-Field Usage*

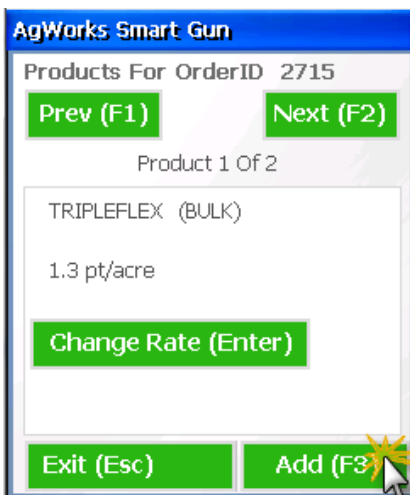
The screenshot shows the 'Product information' dialog box. The 'Options' section contains several checkboxes: Bulk, Discontinued, In Use, In-Field Usage (highlighted with a yellow starburst), Assembly, Do Not Inventory, and Taxable. The 'Prices, \$' section on the right has input fields for Cost, Wholesale, Retail, and monthly prices from Winter to February, with a 'Per' dropdown set to 'gal'. Buttons at the bottom include OK, Properties..., Cancel, and Edit Modifiers.

5. Add product to Order
6. Sync handheld
7. Log onto handheld
8. Select Order on handheld

9. Select *Show Products*



10. Select *Add*



11. Specify desired product

